

## Pillar 3 Disclosure Requirements

For the year ended 31<sup>st</sup> December, 2017

### Table DF-2: Capital Adequacy

#### 2.1. Qualitative Disclosures

- 2.1.1. Bank maintains capital as a cushion towards the risk of loss in value of exposure, businesses, etc., to protect the interest of stake holders, more particularly, depositors.
- 2.1.2. Bank has a comprehensive system in place for assessing bank-wide capital requirements based on current and future business activities and monitoring the same on an ongoing basis. The bank considers that capital availability is the central theme in the whole process and its computation is relatable to policy, strategy, business level/composition, and Supervisory concern and Disclosure issues. Towards this, bank has evolved a well laid down Internal Capital Adequacy Assessment Process (I-CAAP) policy framework and carries out capital calculation under Pillar-II besides Pillar 1 Capital calculation.
- 2.1.3. The Bank has implemented a Board approved Stress Testing Framework which forms an integral part of the Bank's ICAAP. Stress Testing involves the use of various techniques to assess the Bank's potential vulnerability to extreme but plausible stressed business conditions and to measure the impact of adverse stress scenarios on the adequacy of capital at periodical intervals.
- 2.1.4. In line with RBI guidelines, the bank has adopted following approaches for implementation of New Capital Adequacy Framework - Basel II.
  - Standardised Approach for Credit risk
  - Basic Indicator Approach for Operational risk
  - Standardised Duration Approach for Market risk
- 2.1.5. Bank plans capital requirements and reviews the same on quarterly basis. Bank has done capital assessment upto 2019, as a part of ICAAP framework.
- 2.1.6. Bank has taken initiatives to migrate to Advanced Approaches for Risk Weighted Assets computation, Bank is in the process of implementing a software solution.

## 2.2. Quantitative Disclosures

2.2.1. A summary of the bank's capital requirement for credit, market and operational risk and the capital adequacy ratio as on 31st Dec 2017 is given as under:

(Rs. in million)

A. Capital Requirements for Credit Risk:	
- Portfolios subject to Standardized Approach	249807.00
- Securitisation Exposures	
B. Capital Requirements for Market Risk	
- Standardized Duration Approach	
- Interest Rate Risk	12939.26
- Foreign Exchange Risk (including gold)	121.50
- Equity Position Risk	5635.75
C. Capital Requirements for Operational Risk	
• Basic Indicator Approach	18553.10
D. Capital Adequacy Ratio of the Bank (%) Basel-III	11.37
E. Tier 1 CRAR (%) Basel-III	8.65

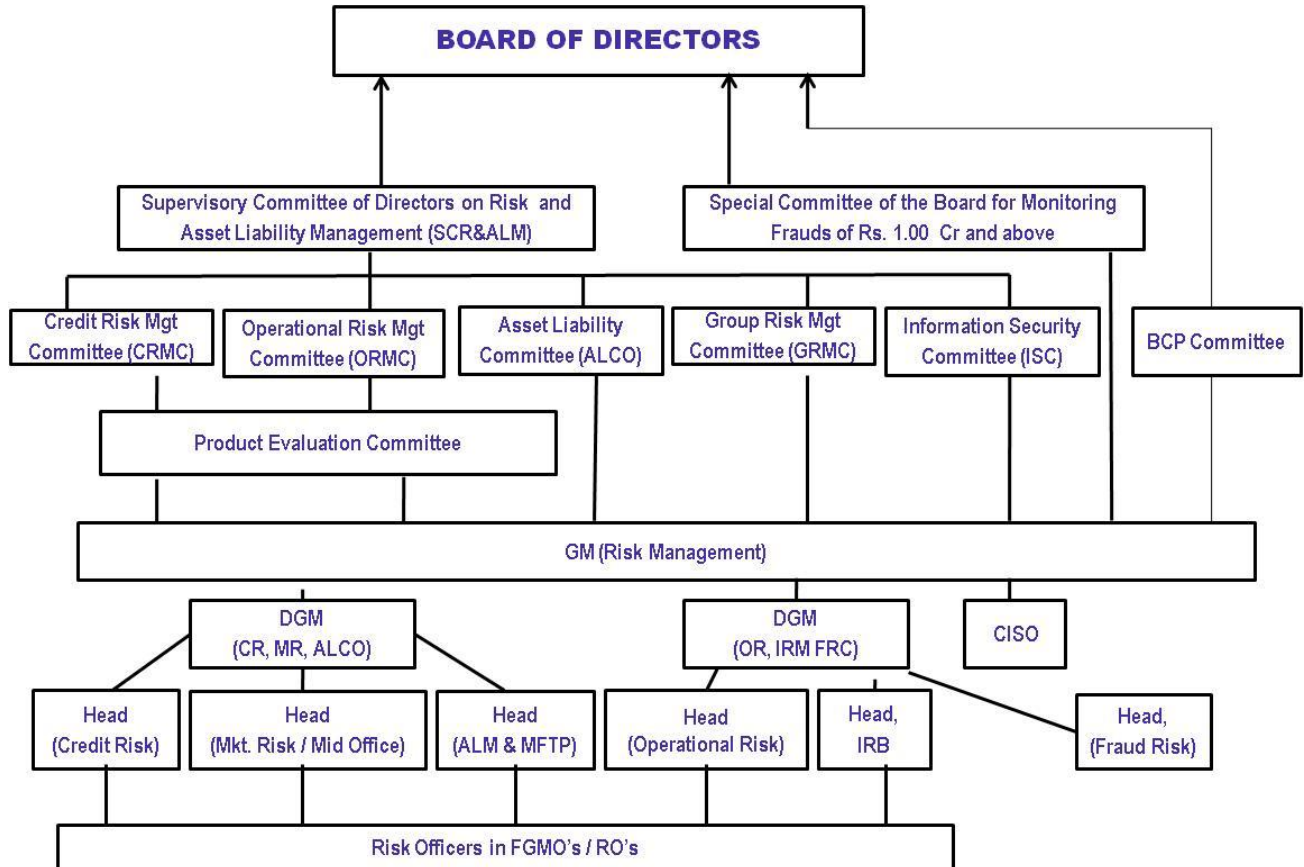
Capital Adequacy Ratios	Union Bank Group (Consolidated)	Union Bank Group (Standalone)
Common Equity Tier -1 CRAR	7.25 %	7.18 %
Tier -1 CRAR	8.72 %	8.65 %
Total CRAR	11.44 %	11.37 %

## 2.3. General Qualitative disclosures

### a. Risk Management: Objectives and Organization Structure

- The bank has a credible and comprehensive risk management structure and has taken various initiatives to strengthen the risk management practices. The Bank has an integrated approach for management of risk. The risk management policies are commensurate with the business requirements and are as per the guidelines of Reserve Bank of India. The risk management system encompasses the different types of risks viz. credit risk, market risk and operational risk.
- The bank has also formulated Board approved Country specific risk policy for its foreign branches i.e. Hong Kong, DIFC Dubai, Sydney and Antwerp. The policies are drawn based on the risk dimensions of Hong Kong, Dubai, Australian and Belgium economy and the bank's risk appetite.
- The Board of Directors of the Bank has an oversight of Risk Management activities of the Bank. The Bank's Supervisory Committee of Directors on Risk Management & ALM is the Apex Body/Committee to oversee various Risk Management activities. The Bank also has separate Committees of Top Executives i.e., Credit Risk Management Committee (CRMC),

Asset & Liability Committee (ALCO) and Operational Risk Management Committee (ORMC) to deal with Credit, Market and Operational Risk respectively. Further, the bank has Risk Management organizational structure in place not only at corporate office but also at Regional Offices/Field General Manager’s Offices. The broad risk management organizational structure of the bank is furnished as under:



## 2.4. Credit Risk:

### a. Credit Risk Governance

- Credit risk arises from the potential that an obligor is either unwilling to perform on an obligation or his ability to perform such obligation is impaired resulting in economic loss to the bank.
- The Bank is exposed to Credit Risk through Lending and Investment activities.
- Bank has well laid down Loan Policy, Credit Risk Management Policy, Real Estate Policy and Credit Risk Mitigation (CRM) Techniques & Collateral Management Policy which covers guidelines on the entire gamut of Credit Risk Management Process. Loan Policy & Credit Risk Management Policy, spells out the target markets, risk acceptance/avoidance, risk tolerance, preferred levels of diversification and concentration, credit risk measurement, monitoring and controlling mechanisms.

- Bank has an appropriate and independent organizational structure with an oversight mechanism for management of credit risk, which includes Credit Risk Management Committee (CRMC) of Top Executives and a separate Credit Risk Management Cell looking after the Credit Risk. Besides, there is a separate Board Level Committee i.e., Supervisory committee of the Board to oversee the functioning of Risk Management and ALM.
- CRMC deals with issues relating to credit policy, procedures and control measures for credit risk on a Bank-wide basis.

#### **b. Credit Approval Process**

- Loan Policy of the bank covers in detail guidelines on credit approval process which among other things include thrust area and non thrust area, due diligence criteria, KYC norms, method of assessment of finance, minimum credit standards, take over code norms, Prudential & Regulatory ceilings etc.

#### **c. Credit Monitoring System**

- Credit monitoring is a continuous process. Credit monitoring is undertaken by a dedicated credit monitoring department. Bank has separate policy on credit monitoring which includes guidelines on:
  - Identification and monitoring of Special Mention Accounts (SMA-0, SMA-1 and SMA-2) accounts and triggers points for initiating timely action.
  - Formation of Joint Lenders' Forum (JLF) and formulation of Corrective Action Plan (CAP) in case of Consortium/Multiple Banking Arrangement accounts for early rectification or restructuring.
  - Periodicity of review of the borrowal accounts based on credit quality. Borrowers with lower credit rating are subject to more frequent reviews.
  - Submission of periodical monitoring reports.
  - Different hierarchical levels for monitoring.

#### **d. Credit Rating Framework**

- Bank has comprehensive internal credit rating/scoring models being applied in the Credit Administration and Approval process. Credit rating framework is a combination of quantitative and qualitative aspects. Credit Rating depicts credit quality and predicts probability of default.
- Credit Rating models are in place for Credit Rating of Borrowers, Non-SLR Investments, Inter Bank Exposures and Exposure to NBFC & MFIS.
- Credit scoring models are in place for retail lending schemes.
- Independent assignment of Credit Rating is in place. The Credit Rating is reviewed annually and for high-risk accounts, credit rating is done half-yearly.
- In terms of Bank's credit rating framework, there are 10 risk-rating grades in standard category and 'investment grade' is fixed up to Credit Rating-5.
- The bank carries out analysis on rating wise distribution of borrowers on obligor basis and portfolio basis at periodical intervals and monitors the same.

**e. Credit Approval Committees:**

- As per the government guidelines and as per the Board approved structure, Bank has introduced Credit Approval Committee (CAC) at Regional Offices, FGMO and Central Office for credit sanction. Risk Management Department is represented in all CACs.

**f. Credit Concentration Risk**

- Credit concentration is addressed with the following measures :
- The bank has fixed prudential / regulatory ceilings for various categories of advances for diversifying the credit portfolio and the same is monitored periodically. The bank has well diversified credit portfolio.
- Bank monitors the adherence to the exposure ceilings on a quarterly basis. Bank also has a well-established system of monitoring large exposure through monthly monitoring report. The credit portfolio of the bank is well diversified so as to reduce concentration in any area.
- Credit Risk appetite of the Bank is defined as a part of Internal Capital Adequacy Assessment Process (ICAAP) by fixing ceilings limits for various parameters. They are monitored on quarterly basis by undertaking the assessment of ICAAP.

**2.5. Market Risk**

- Market Risk Management is covered in Treasury Policy, Market Risk Policy and ALM Policy.
- There is a clear-cut separation between front office, back office and mid-office in Treasury operations.
- Mid-office directly reports to the Risk Management Department.
- Various Limits - for domestic and foreign exchange operations, e.g. Net Overnight Open Position (NOOP), Daylight Open Position limit, VaR limits, Deal size limits, Stop Loss limits, Aggregate Gap Limit (AGL), Individual Gap Limit (IGL), counterparty limits etc. are in place.
- Value at Risk (VaR) is being monitored on AFS & HFT G-sec, equity Portfolio and forex transactions on a daily basis.

**2.6. Interest Rate Risk In banking Book:**

- Bank carries out Duration Gap Analysis (DGA) to capture impact of changes in interest rates by 200 bps on market value of equity in terms of RBI Guidelines.

**2.7. Operational Risk**

- A well laid down board approved Operational Risk Management Policy is in place.
- Presently, Operational Risk is managed through Internal Control System, Internal Audit Process.
- New Product Approval Process is in place.

- Analysis of frauds is done from the angle of operational risk to assess the adequacy and efficacy of internal controls.
- Guidelines for mapping bank's activities and income are in place.
- Bank conducts Risk and Control Self Assessment (RCSA) in respect of various products/process.
- Since internal Operational Risk (OR) Loss Data points are limited in number, bank has joined external data pooling exercise of IBA.

**Table DF-3: Credit Risk: General Disclosures**

### Qualitative Disclosures

**a. General Qualitative disclosure pertaining to credit risk:**

- **Overdue:**  
Any amount due to the bank under any credit facility is "overdue" if it is not paid on the due date fixed by the bank.
- **An impaired Asset:**  
An impaired asset is a loan or an advance when it ceases to generate income for the bank. A Non Performing Asset (NPA) is a loan or an advance where:
  - a) Interest and/or installment of principal remain overdue for a period of more than 90 days in respect of a term loan.
  - b) The account remains out of order in respect of an overdraft/cash credit (OD/CC):
    - If the outstanding balance remains continuously in excess of the sanctioned limit/drawing power.
    - In cases where the outstanding balance in the principal operating account is less than the sanctioned limit/drawing power, but there are no credits continuously for 90 days as on the date of balance sheet or credits are not enough to cover the interest debited during the same period.
  - c) In case of bills purchased & discounted, if the bill remains overdue for a period of more than 90 days.
  - d) In case of Crop Loans
    - The installment of principal or interest thereon, remains overdue for two crop seasons in case of short duration crop.
    - Installment of principal or interest there on, remains overdue for one crop season in case of long duration crop.
  - e) If interest charged (including monthly interest) during any quarter is not serviced fully within 90 days from the end of the quarter.
  - f) Any amount to be received remains overdue for a period of more than 90 days in respect of other accounts.

▪ **Credit Risk Management Policy:**

Bank has board-approved Credit Risk Management Policy besides Loan Policy. Credit Risk Management Policy covers guidelines on the Credit Approval process - Credit Risk Framework, loan pricing and concessions, Loan Monitoring & Controls, Credit Risk Rating Systems - pricing - capital allocation, Portfolio Management & Exposure ceilings, Prudential/Regulatory ceilings, such as industry wise exposure, sensitive sector exposure (capital market/ real estate exposure) and Risk Management of off-balance sheet exposure,

**Quantitative Disclosures**

**b. The total gross credit risk exposures are:**

(Rs. in million)

Category	Amount
Fund Based	4240059.19
Non Fund Based	879778.04
<b>Total</b>	<b>5119837.23</b>

**c. The geographic distribution of exposures is:**

(Rs. in million)

	Overseas	Domestic	Gross Advances
Fund Based	334852.72	3905206.47	4240059.19
Non-fund based	22990.87	856787.17	879778.04
<b>Total</b>	<b>357843.59</b>	<b>4761993.64</b>	<b>5119837.23</b>

**d. Industry type distribution of exposures (Fund Based and Non-Fund Based) are as under:**

(Rs. in million)

DSB Code	INDUSTRY NAME	Fund Based	Non-Fund Based
A	MINING & QUARRYING	13,112.59	2,808.11
A.1	COAL	7,432.73	2,154.97
A.2	OTHERS	5,679.86	653.14
B	FOOD PROCESSING	142,769.86	3,842.44
B.1	SUGAR	30,996.16	454.54
B.2	EDIBLE OILS & VANASPATI	25,772.13	1,000.57
B.3	TEA	2,546.14	119.06
B.4	COFFEE	14.02	0.28
B.5	OTHERS	83,441.42	2,267.98
C	BEVERAGES (excl. Tea & Coffee) & TOBACCO	3,559.37	62.13
C.1	TOBACCO & TOBACCO PRODUCTS	872.28	4.02
C.2	OTHERS	2,687.09	58.11
D	TEXTILES	124,995.35	6,330.35
D.1	COTTON	48,032.71	1,537.90
D.2	JUTE	1,457.01	105.29
D.3	Man-made	25,413.28	2,460.52

(Rs. in million)

DSB Code	INDUSTRY NAME	Fund Based	Non-Fund Based
D.4	Others	50,092.35	2,226.65
	Out of 'D' SPINNING MILLS	0.00	0.00
E	LEATHER & LEATHER PRODUCTS	4,708.50	76.50
F	WOOD & WOOD PRODUCTS	927.69	172.72
G	PAPER & PAPER PRODUCTS	19,241.90	1,040.90
H	PETROLEUM (non-infra), COAL PRODUCTS (non-mining) & NUCLEAR FUELS	38,527.77	37,164.43
I	CHEMICALS & CHEMICAL PRODUCTS (Dyes, Paints etc.)	88,326.23	11,661.67
I.1	FERTILIZER	23,617.78	1,264.82
I.2	DRUG & PHARMACEUTICALS	22,739.46	912.24
I.3	PETROCHEMICALS (excl infra)	3,454.96	228.94
I.4	OTHERS	38,514.03	9,255.67
J	RUBBER, PLASTIC & THEIR PRODUCTS	2,332.35	317.87
K	GLASS & GLASSWARE	5,663.10	638.40
L	CEMENT & CEMENT PRODUCTS	20,127.11	766.29
M	BASIC METAL & METAL PRODUCTS	195,223.04	29,603.36
M.1	IRON & STEEL	153,252.94	25,730.56
M.2	OTHER METAL & METAL PRODUCTS	41,970.10	3,872.80
N	ALL ENGINEERING	27,262.96	58,526.34
N.1	ELECTRONICS	6,277.36	2,691.84
N.2	OTHERS	20,985.60	55,834.50
O	VEHICLE, VEHICLE PARTS & TRANSPORT EQUIPMENTS	41,334.03	21,321.47
P	GEMS & JEWELLERY	81,073.68	6,602.32
Q	CONSTRUCTION	77,442.70	78,362.50
R	INFRASTRUCTURE	493,254.55	134,122.95
R.A	TRANSPORT (A.1 TO A.6)	94,875.39	11,106.31
R.A.1	ROADS AND BRIDGES	88,861.99	10,106.31
R.A.2	PORTS	6,013.40	1,000.00
R.A.3	INLAND WATERWAYS	0.00	0.00
R.A.4	AIRPORT	0.00	0.00
R.A.5	RAILWAY TRACK, TUNNELS, VIADUCTS, BRIDGES	0.00	0.00
R.A.6	URBAN PUBLIC TRANSPORT (EXCEPT ROLLING STOCK IN CASE OF URBAN ROAD TRANSPORT)	0.00	0.00
R.B.	ENERGY (B.1 TO B.6)	211,116.14	86,735.36
R.B.1	ELECTRICITY GENERATION	177,240.82	38,441.79
R.B.1.1	CENTRAL GOVT PSUS	0.00	0.00



(Rs. in million)

DSB Code	INDUSTRY NAME	Fund Based	Non-Fund Based
R.B.1.2	STATE GOVT PSUS (INCL. SEBS)	4,166.90	2,406.70
R.B.1.3	PRIVATE SECTOR	173,073.92	36,035.09
R.B.2	ELECTRICITY TRANSMISSION	4,349.70	13,389.00
R.B.2.1	CENTRAL GOVT PSUS	0.00	0.00
R.B.2.2	STATE GOVT PSUS (INCL. SEBS)	0.00	0.00
R.B.2.3	PRIVATE SECTOR	4,349.70	13,389.00
R.B.3	ELECTRICITY DISTRIBUTION	26,615.13	29,904.57
R.B.3.1	CENTRAL GOVT PSUS	0.00	0.00
R.B.3.2	STATE GOVT PSUS (INCL. SEBS)	0.00	0.00
R.B.3.3	PRIVATE SECTOR	26,615.13	29,904.57
R.B.4	OIL PIPELINES	0.00	0.00
R.B.5	OIL/GAS/LIQUEFIED NATURAL GAS (LNG) STORAGE FACILITY	0.00	0.00
R.B.6	GAS PIPELINES	2,910.50	5,000.00
R.C.	WATER AND SANITATION (C.1 TO C.7)	57,487.62	271.08
R.C.1	SOLID WASTE MANAGEMENT	0.00	
R.C.2	WATER SUPPLY PIPELINES	0.00	0.00
R.C.3	WATER TREATMENT PLANTS	2,007.92	271.08
R.C.4	SEWAGE COLLECTION, TREATMENT AND DISPOSAL SYSTEM	929.00	0.00
R.C.5	IRRIGATION (DAMS, CHANNELS, EMBANKMENTS ETC)	54,550.70	0.00
R.C.6	STORM WATER DRAINAGE SYSTEM	0.00	0.00
R.C.7	SLURRY PIPELINES	0.00	0.00
R.D.	COMMUNICATION (D.1 TO D.3)	99,440.23	35,121.68
R.D.1	TELECOMMUNICATION (FIXED NETWORK)	93,568.13	34,822.08
R.D.2	TELECOMMUNICATION TOWERS	5,872.10	299.60
R.D.3	TELECOMMUNICATION AND TELECOM SERVICES	0.00	0.00
R.E.	SOCIAL AND COMMERCIAL INFRASTRUCTURE (E.1 TO E.9)	30,335.17	888.53
R.E.1	EDUCATION INSTITUTIONS (CAPITAL STOCK)	0.00	0.00
R.E.2	HOSPITALS (CAPITAL STOCK)	0.00	0.00
R.E.3	THREE-STAR OR HIGHER CATEGORY CLASSIFIED HOTELS LOCATED OUTSIDE CITIES WITH POPULATION OF MORE THAN 1 MILLION	22,767.81	563.39
R.E.4	COMMON INFRASTRUCTURE FOR INDUSTRIAL PARKS, SEZ, TOURISM FACILITIES AND AGRICULTURE MARKETS	7,567.36	325.14
R.E.5	FERTILIZER (CAPITAL INVESTMENT)	0.00	0.00
R.E.6	POST HARVEST STORAGE INFRASTRUCTURE FOR AGRICULTURE AND HORTICULTURAL	0.00	0.00

(Rs. in million)

DSB Code	INDUSTRY NAME	Fund Based	Non-Fund Based
	PRODUCE INCLUDING COLD STORAGE		
R.E.7	TERMINAL MARKETS	0.00	0.00
R.E.8	SOIL-TESTING LABORATORIES	0.00	0.00
R.E.9	COLD CHAIN	0.00	0.00
R.F	others, if any, please specify	0.00	0.00
S.	<b>OTHER INDUSTRIES, PL. SPECIFY</b>	7,866.75	146.05
	PUBLISHING PRINTING	1,286.47	82.13
	CUTTING , SHAPING OF STONES	3,250.13	20.67
	MICA, MICA PRODUCTS	271.25	1.85
	MUSICAL INSTRUMENTS	3.58	0.12
	SPORTS GOODS , GAMES	1,185.03	4.07
	STATIONERIES	816.57	10.83
	IMMITATION JEWELLEY	166.50	0.00
	LINOLEUM FLOOR COVERING	165.50	0.00
	RECYCLING METAL, NON METAL WASTE	704.23	26.37
	STEAM HOT WATER SUPPLY	17.50	0.00
	ALL INDUSTRIES (A to S)	1387749.56	393566.78
	Residuary Other Advances	1631717.40	0.00
	<b>TOTAL</b>	<b>3019466.96</b>	<b>393566.78</b>
	Other Advances (Retail, Mortgage, Banks, NBFC etc)	1220592.23	486211.26
		4240059.19	879778.04

e. The residual contractual maturity break down of assets is as under:

(Rs.in millions)

Maturity Pattern	Advances	Investments	Foreign Currency Assets
Next day	53532.12	251988.70	57034.37
2 - 7 days	57672.66	37578.50	30323.20
8 -14 days	41204.26	825.40	23388.89
15- 30 days	94776.27	170.10	53341.41
31days - 2months	161693.38	4225.10	49265.90
2months - 3months	154357.81	7830.50	93646.87
>3months-6months	111100.48	40410.89	100483.97
>6months-1yr	182809.12	37385.20	72628.11
>1yr-3yrs	1176381.32	261619.43	73168.57
>3yrs-5yrs	366993.27	157716.90	101056.82
>5yrs	536165.82	424126.92	11705.52
<b>Total</b>	<b>2936686.51</b>	<b>1223877.65</b>	<b>666043.63</b>

**f. The Amount of Gross NPAs are as under:**

Category	(Rs. in million)
Sub Standard	96051.40
Doubtful - 1	127059.20
Doubtful - 2	108717.40
Doubtful - 3	55696.30
Loss	22359.20
<b>Total NPAs (Gross)</b>	<b>409883.50</b>

**g.** The amount of net NPAs is Rs. 204282.20 Million.

**h. The NPA ratios are as under:**

- Gross NPAs to Gross Advances: 13.03 %.
- Net NPAs to Net Advances: 6.96 %.

**i. The movement of gross NPAs is as under:**

	(Rs. in million)
i) Opening Balance at the beginning of the year	337122.80
ii) Addition during the year	113260.00
iii) Reduction during the year	40499.30
iv) Closing Balance as at the end of the year (i+ii-iii)	<b>409883.50</b>

**j. (a) The movement of Specific Provision (Provisions for NPAs) is as under:**

	(Rs. in million)
i) Opening Balance at the beginning of the year	148801.70
ii) Provisions made during the year	88839.70
iii) Write-off/Write -back of excess provisions	40591.50
iv) Closing Balance as at the end of the year (i+ii-iii)	197049.90

Provisions include provision in lieu of diminution in fair value of restructured advances classified as NPAs.

Opening and closing balances of provision for NPAs also include ECGC claims received/ recoveries in suit filed accounts and held pending adjustment of Rs 1090.00 million (previous year Rs 286.70 million) and Rs 6.10 million (previous year Rs 6.80 million) respective.

(b) The movement of General Provision (provision for standard assets) is as under:

(Rs. in million)

	Std. prov. for Advances	Std. prov. for Derivatives	Total
	A	B	C=(A+B)
i) Opening Balance at the beginning of the year	20173.53	168.90	20342.43
ii) Provisions made during the year	267.77	0.00	267.77
iii) Write-off made during the year	0.00	0.00	0.00
iv) Write -back of excess provisions	0.00	63.54	63.54
v) Any other adjustments, including transfers between provisions	0.00	0.00	0.00
vi) Closing Balance as at the end of the year	20441.30	105.36	20546.66

k. The amount of Non-Performing Investment is Rs. 5,692.38 million

l. The amount of provisions held for Non-Performing Investment is Rs. 4,761.86 million

m. The movement of provisions for depreciation on investments is as under:

(Rs. in million)

i) Opening balance at the beginning of the year	11,824.55
ii) Provisions made during 9 months	10,059.82
iii) Write-off made during 9 months in year	-
iv) Write -back of excess provisions	5,705.71
v) Closing balance as at the end of Dec qtr (i + ii - iii - iv)	16,178.66

n. By major industry or counterparty type:

(a) Details of Specific Provisions:

(Rs. in million)

DSB Code	INDUSTRY NAME	GROSS NPA	WRITE OFFS	PROVISIONS FOR NPA
A	MINING & QUARRYING	922.85	429.60	173.71
A.1	COAL	197.78	1.82	30.18
A.2	OTHERS	725.07	427.78	143.53
B	FOOD PROCESSING	22506.23	1907.82	9741.47
B.1	SUGAR	7395.73	260.33	2782.39
B.2	EDIBLE OILS & VANASPATI	5987.26	194.13	2652.34
B.3	TEA	5.49	10.93	1.64
B.4	COFFEE	0.26	0.10	0.25
B.5	OTHERS	9117.50	1442.32	4304.86
C	BEVERAGES (excl. Tea & Coffee) & TOBACCO	681.40	377.00	362.53
C.1	TOBACCO & TOBACCO PRODUCTS	24.43	0.11	9.80

DSB Code	INDUSTRY NAME	GROSS NPA	WRITE OFFS	PROVISIONS FOR NPA
C.2	OTHERS	656.98	376.89	352.73
D	TEXTILES	18894.21	4061.18	7831.37
D.1	COTTON	8274.79	1965.08	3303.67
D.2	JUTE	19.52	4.90	7.20
D.3	HANDICRAFT/KHADI (Non Priority)	0.00	0.00	0.00
D.4	SILK	0.00	0.00	0.00
D.5	WOOLEN	0.00	0.00	0.00
D.6	OTHERS	10599.90	2091.20	4520.50
	Out of 'D' SPINNING MILLS	0.00	0.00	0.00
E	LEATHER & LEATHER PRODUCTS	479.23	175.98	146.15
F	WOOD & WOOD PRODUCTS	3078.50	366.91	1169.40
G	PAPER & PAPER PRODUCTS	3625.64	425.48	1314.28
H	PETROLEUM (non-infra), COAL PRODUCTS (non-mining) & NUCLEAR FUELS	2298.34	200.27	695.25
I	CHEMICALS & CHEMICAL PRODUCTS (Dyes, Paints etc.)	8776.53	1921.72	3838.14
I.1	FERTILIZER	14.01	0.22	3.02
I.2	DRUG & PHARMACEUTICALS	4657.28	1414.62	1311.01
I.3	PETROCHEMICALS (excl infra)	98.65	303.03	38.45
I.4	OTHERS	4006.60	203.85	2485.66
J	RUBBER, PLASTIC & THEIR PRODUCTS	2245.54	228.62	1333.70
K	GLASS & GLASSWARE	621.92	127.83	248.04
L	CEMENT & CEMENT PRODUCTS	558.51	900.45	239.10
M	BASIC METAL & METAL PRODUCTS	81981.25	8283.77	30851.64
M.1	IRON & STEEL	69836.93	7653.98	24353.69
M.2	OTHER METAL & METAL PRODUCTS	12144.33	629.79	6497.95
N	ALL ENGINEERING	19511.41	4982.74	6406.40
N.1	ELECTRONICS	8328.66	278.99	1252.97
N.2	OTHERS	11182.76	4703.75	5153.44
O	VEHICLE, VEHICLE PARTS & TRANSPORT EQUIPMENTS	1973.34	237.03	566.35
P	GEMS & JEWELLERY	14912.14	1625.57	10292.53
Q	CONSTRUCTION	24238.00	5580.80	6308.05
R	INFRASTRUCTURE	65733.29	14679.25	17903.97
R.1	TRANSPORT	18270.74	3983.80	6649.42
R.1.1	RAILWAYS	0.00	0.00	0.00
R.1.2	ROADWAYS & BRIDGE	18270.74	3983.80	6649.42
R.1.3	AIRPORT	0.00	0.00	0.00
R.1.4	WATERWAYS	0.00	0.00	0.00
R.1.5	OTHERS	0.00	0.00	0.00
R.2	ENERGY	20869.75	6749.05	8222.54

DSB Code	INDUSTRY NAME	GROSS NPA	WRITE OFFS	PROVISIONS FOR NPA
R.2.1	ELECTRICITY (GEN-TRANS-DISTR)	20869.00	6748.78	8221.80
R.2.1.1	STATE ELECTRICITY BOARDS	0.00	0.00	0.00
R.2.1.2	OTHERS	20869.00	6748.78	8221.80
R.2.2	OIL (STORAGE & PIPELINE)	0.00	0.00	0.00
R.2.3	GAS/LNG (STORAGE & PIPELINE)	0.00	0.00	0.00
R.2.4	OTHERS	0.75	0.27	0.74
R.3	TELECOMMUNICATION	11069.13	0.13	2179.30
R.4	OTHERS	15523.68	3946.27	852.72
R.4.1	WATER SANITATION	14334.99	2778.30	843.70
R.4.2	SOCIAL & COMMERCIAL INFRASTRUCTURE	1188.69	1167.97	9.02
R.4.3	OTHERS	0.00	0.00	0.00
S	OTHER INDUSTRIES	1425.50	304.90	976.50
	<b>ALL INDUSTRIES</b>	<b>274463.84</b>	<b>46816.92</b>	<b>100398.58</b>
	RESIDUARY & OTHER ADVANCES	135419.70	19654.60	96651.30
a	EDUCATION	2655.70	329.30	1900.00
b	AVIATION	0.00	0.00	0.00
c	OTHER RESIDUARY ADVANCES	132764.00	19325.30	94751.32
	<b>TOTAL</b>	<b>409883.54</b>	<b>66471.52</b>	<b>197049.90</b>

(a) Details of General Provisions:

(Rs. In million)

Standard Advance	Provision as on 31.12.2017
i) SME and Agri Advance	1830.30
ii) Commercial Real Estate	461.10
iii) Commercial Real Estate (RH)	362.20
iv) Home Loan	14.60
v) Restructured Standard Advances	1773.30
vi) Balance Standard Advance (excluding FITL - Std. Advance)	14102.60
vii) Total Domestic Standard Advance	18544.10
viii) Overseas Standard Advance	1897.20
ix) Total Standard Advance	20441.30

o. (a) Geographic distribution of NPAs and Specific Provisions (Provisions for NPAs):

(Rs. in million)

Particulars	Domestic	Overseas	Total
Gross NPA	380469.10	29414.40	409883.50
Provisions for NPA	183392.60	13657.30	197049.90

(b) Geographic distribution of General Provisions (Provisions for Standard Assets):

(Rs. in million)

Particulars	Domestic	Overseas	Total
Provision for Standard Advances	18544.10	1897.34	20441.44
Provisions for Standard Derivatives	105.36	0.00	105.36

**Table DF-4: Credit Risk Disclosures for Portfolios subject to Standardized Approach**

**Qualitative Disclosures**

**a. For portfolios subject to the standardized approach**

- Bank has approved the following 6 domestic credit rating agencies accredited by RBI for all eligible exposures.
  - a) Credit Analysis and Research Limited;
  - b) CRISIL Limited;
  - c) India Ratings and Research Private Limited (India Ratings);
  - d) ICRA Limited;
  - e) Brickwork Ratings India Pvt. Limited (Brickwork); and
  - f) SME Rating Agency of India Ltd. (SMERA)
  - g) Infomerics valuation and Ratings Private Limited.
  
- Bank has also approved the following 3 international credit rating agencies identified by RBI.
  - a) Standard & Poor's
  - b) Moody's
  - c) FITCH
  
- Corporate borrowers and Public Sector Enterprises are being encouraged to solicit ratings from approved external rating agencies. The ratings available in public domain are mapped for the purpose of calculation of risk-weighted assets as per RBI guidelines on mapping.

**Quantitative Disclosures**

- b. The exposure amounts after risk mitigation subject to the standardized approach, amount of a bank's out standings (rated and unrated) in the following three major risk buckets as well as those that are deducted:

(Rs. in million)

i) Below 100% risk weight exposure outstanding	2050362.19
ii) 100% risk weight exposure outstanding	594215.58
iii) More than 100% risk weight exposure outstanding	466406.70
iv) Deduction	0.00
<b>Total</b>	<b>3110984.47</b>

DF 17- Summary comparison of accounting assets vs. leverage ratio exposure measure		
	Item	(Rs. in Million)
1	Total consolidated assets as per published financial statements	4778478.63
2	Adjustment for investments in banking, financial, insurance or commercial entities that are consolidated for accounting purposes but outside the scope of regulatory consolidation	-18046.66
3	Adjustment for fiduciary assets recognised on the balance sheet pursuant to the operative accounting framework but excluded from the leverage ratio exposure measure	0.00
4	Adjustments for derivative financial instruments	42104.00
5	Adjustment for securities financing transactions (i.e. repos and similar secured lending)	0.00
6	Adjustment for off-balance sheet items (i.e. conversion to credit equivalent amounts of off- balance sheet exposures)	390436.74
7	Other adjustments	-9723.90
8	<b>Leverage ratio exposure</b>	<b>5183248.81</b>

DF-18 - Leverage ratio common disclosure template		
	Item	Leverage ratio framework
<b>On-balance sheet exposures</b>		
1	On-balance sheet items (excluding derivatives and SFTs, but including collateral)	4711723.40
2	(Asset amounts deducted in determining Basel III Tier 1 capital)	-9723.90
3	<b>Total on-balance sheet exposures</b> (excluding derivatives and SFTs) (sum of lines 1 and 2)	<b>4701999.50</b>
4	Replacement cost associated with all <i>derivatives</i> transactions (i.e. net of eligible cash variation margin)	25694.57
5	Add-on amounts for PFE associated with <i>all</i> derivatives transactions	42104.00
6	Gross-up for derivatives collateral provided where deducted from the balance sheet assets pursuant to the operative accounting framework	0.00
7	(Deductions of receivables assets for cash variation margin)	0.00



	provided in derivatives transactions)	
8	(Exempted CCP leg of client-cleared trade exposures)	0.00
9	Adjusted effective notional amount of written credit derivatives	0.00
10	(Adjusted effective notional offsets and add-on deductions for written credit derivatives)	0.00
11	<b>Total derivative exposures (sum of lines 4 to 10)</b>	<b>67798.57</b>
12	Gross SFT assets (with no recognition of netting), after adjusting for sale accounting transactions	23315.10
13	(Netted amounts of cash payables and cash receivables of gross SFT assets)	-1445.70
14	CCR exposure for SFT assets	1144.60
15	Agent transaction exposures	0.00
16	<b>Total securities financing transaction exposures (sum of lines 12 to 15)</b>	<b>23014.00</b>
17	Off-balance sheet exposure at gross notional amount	718961.15
18	(Adjustments for conversion to credit equivalent amounts)	-328524.41
19	<b>Off-balance sheet items (sum of lines 17 and 18)</b>	<b>390436.74</b>
20	<b>Tier 1 capital</b>	<b>253408.20</b>
21	<b>Total exposures (sum of lines 3, 11, 16 and 19)</b>	<b>5183248.81</b>
22	<b>Basel III leverage ratio</b>	<b>4.89%</b>