

UNION BANK OF INDIA

RO, HOWRAH

NOTICE FOR INVITING TENDERS

ONLY FOR EMPANELLED CONTRACTOR

Sealed tenders/offers on items rate/percentage over estimates/cost basis are invited from our empanelled contractors having sound technical and financial capacity for undertaking **Electrical work** at BSNL BE COLLEGE TELEPHONE EXCHANGE for MLP & RLP given below.

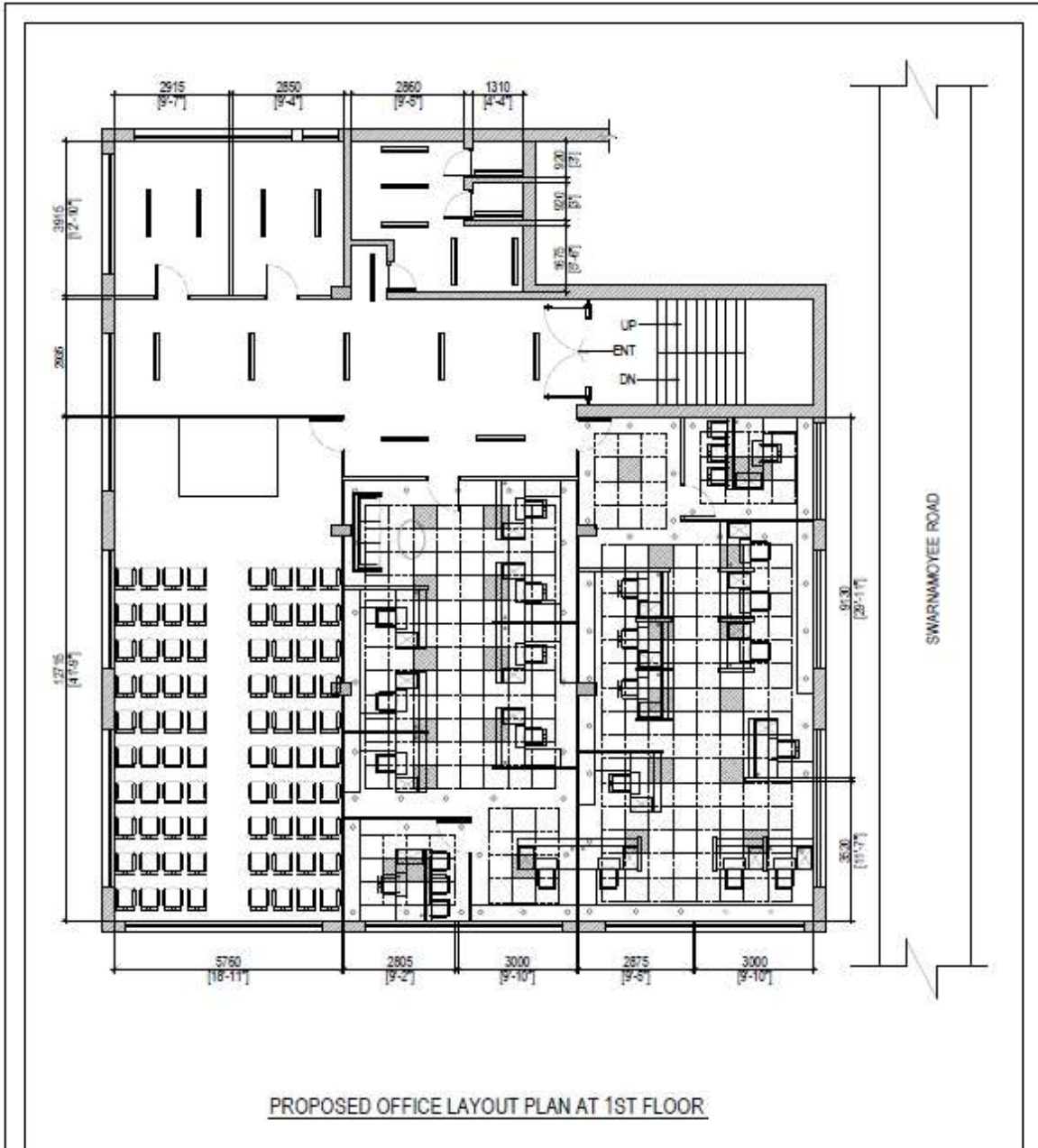
Interested empanelled contractors may visit our Bank's website www.unionbankofindia.com and Govt. portal www.eprocure.gov.in and requested to study the drawings /go through the tender documents, specifications as per Bank's standardization and in case of any difficulty please visit us for seeking clarification, if any, prior to submission of their sealed offers.

Estimated cost of works for Branch	Rs. 6.50 Lacs
Tender Cost	Rs.1000/- (Non-refundable) by DD / Pay Order favouring Union Bank of India, payable at Howrah. Offer without document / Tender cost will be summarily rejected.
1. EMD	Bidders will be required to submit EMD of Rs.13,000/- in the form of D.D. in favour of Union Bank of India, RO, Howrah, payable at Howrah.
2. Performance Security	Successful bidder is required to deposit Performance Security of Rs.32,500.00 in form of Demand Draft/Bank Guarantee/Fixed Deposit from receipt from commercial Bank in favour of Union Bank Of India valid for 60 days beyond the date of completion of work. Tenders without Tender cost / EMD shall be summarily rejected. Contractors registered with MSME / NSIC or the concerned Ministry or Department notified time to time by Govt. of India/CVC can seek exemption from cost of RFP and EMD by providing valid registration certificate along with the document. Incomplete application will not be considered.
Retention Money	Retention money at 8 % of total work order will be deducted from final bill and to be held with the bank for defect liability period (one year) and will be released only after completion of Defect liability period on vendor's request.
Time of Completion of work	45 days from acceptance of work order. Work to Start immediately after getting the work order.
Time & Submission of Tender	Before 3.00 P.M. on 30.04.2024
Time & date of Opening of Tender	3.30 P.M. on 30.04.2023
Address of Work Site	1 st Floor, B E College Telephone Exchange Building, 15, Swarnamoyee Road, IEST, Shalimar, Howrah, West Bengal-711103

The bank will not be bound to accept the lowest tender and reserves the right to accept or reject any or all the tenders without assigning any reason.

Dated: 18.04.2024
Howrah

Chief Manager (Operations)



UNION BANK OF INDIA # HOWRAH REGION # MLP & RLP					
B O Q FOR ELECTRICAL WORKS					
SI No.	Description Of Item	Qty.	Unit	Rate (Rs.)	Amount (Rs.)
1	MAIN INCOMING SFU				
	S//T/Commissioning of 160 Amp. TPN Main Switch (HRC type SFU) at main incoming from CESC / SEB to be fixed on MS angle framework & 2 nos. cable end box including necessary interconnections	1	unit		0.00
2	MAIN PANEL BOARD				
	S//T/Commissioning of Main Distribution Panel as per given below: - 440 Volts AC, 3 Phase, 50 Hz with 50 KA fault level for 1 second, Floor / Wall mounted, 7 tank cleaning process with duly powder coated with copper bus bar. Incomer : 160 Amps 4P MCCB of 35 KA breaking capacity - with LED type phase indicating lamp, Digital voltmeter, Ammeter with selector switch with required CT unit, Danger Notice Board indicating sign (DANGER) in English, Hindi, Bengali. Outgoing : 63/40 Amps TPN MCB - 4 Nos., 40 Amps DP MCB - 4 Nos., 40 Amp TPN Changeover-1 No., 125 Amp TPN Bus bar Chamber-1 No.	1	unit		0.00
3	DISTRIBUTION BOARDS (All MCBs to be "C" series)				
a	Providing and fixing 12 way SPN double door LIGHT DB for Light Points with incomer 1 no. 40 Amps DP MCB controlling 10 Nos. 6/10 Amp SPMCB Complete.	3	unit		0.00
b	Providing and fixing 12 way SPN double door UPS DB with incomer 1 no. 40 Amps DP MCB controlling 10 nos. 6/10 Amp SP MCB Complete.	2	unit		0.00
c	Providing and fixing 6 way TPN double door AC DB for A.C. POINTS with incomer 1 no. 100 Amps 4P MCB controlling 10 no. 10/16 Amp SPMCB, keeping other space as spare Complete.	2	unit		0.00
d	Providing and fixing 4 way TPN double door POWER DB for RAW POWER POINTS with incomer 1 no. 40 Amps 4P MCB controlling 12 no. 6/10 Amp SPMCB Complete.	2	unit		0.00
e	Providing and fixing 63 Amps TPN Isolator with Cut Out DB (For Master Switch controlling light, AC, power point etc. excluding UPS distribution) near Branch entrance location.	1	unit		0.00
4	UPS INPUT/ OUTPUT				
	63 Amps/40 Amps DP MCB in MS enclosure box	4	unit		0.00
5	CABLES				

a	Providing and placing in position, testing and connecting 1.1 KV grade Al. XLPE cable 3.5-C x 70 sq. mm. with 2 Nos 10 swg GI ECC by GI bar and saddles on wall/floorpass. Cable to be for <u>Main switch to Main Panel</u> Including all necessary terminals etc. complete.	50.00	r. m.		0.00
b	Providing and placing in position, testing and connecting 1.1 KV grade Al. XLPE cable 3.5-C x 25 sq. mm. with 2 Nos 10 swg GI ECC by GI bar and saddles on wall/floorpass. Cable to be for <u>DG to Main Panel</u> Including all necessary terminals etc. complete.	50.00	r. m.		0.00
c	Providing and laying 2 x 6 sq. mm. & 1 x 1.5 sq. mm. FR PVC coated copper conductors (1.1 KV grade) in pvc rigid pipe/capping-casing on surface of wall duly clamping with necessary fittings and accessories from <u>Main Panel to LIGHT DB.</u> Including all necessary terminals etc. complete.	65.00	r. m.		0.00
d	Providing and laying 4 x 6 sq. mm. & 2 x 2.5 sq. mm. FR PVC coated copper conductors (1.1 KV grade) in pvc rigid pipe/capping-casing on surface of wall duly clamping with necessary fittings and accessories from <u>Main Panel to AC DB.</u> Including all necessary terminals etc. complete.	50.00	r. m.		0.00
e	Providing and laying 2 x 4 sq. mm. & 1 x 2.5 sq. mm. FR PVC insulated multi stranded copper wire in suitable size pvc rigid pipe/capping-casing on surface of wall duly clamping with necessary fittings and accessories for <u>AC DB To Starters/Outdoor Units & Glow sign board wiring</u> Including all necessary terminals etc. complete.	150.00	r. m.		0.00
f	Providing and laying 4 x 6 sq. mm. & 2 x 2.5 sq. mm. FR PVC coated copper conductors (1.1 KV grade) in pvc rigid pipe/capping-casing on surface of wall duly clamping with necessary fittings and accessories from <u>Main Panel to POWER DB.</u> Including all necessary terminals etc. complete.	50.00	r. m.		0.00
g	Providing and laying 2 x 2.5 sq. mm. & 1 x 1.5 sq. mm. FR PVC coated copper conductors (1.1 KV grade) in pvc rigid pipe/capping-casing on surface of wall duly clamping with necessary fittings and accessories from <u>Light DB to Switch Boards & Raw Power Point</u> Including all necessary terminals etc. complete.	240.00	r. m.		0.00

h	Providing and laying 4 x 6 sq. mm. FR PVC coated copper conductors (1.1 KV grade) in pvc rigid pipe/capping-casing on surface of wall duly clamping with necessary fittings and accessories from <u>Main DB to UPS Input & UPS Output to UPS DB</u> Including all necessary terminals etc. complete.	80.00	r. m.		0.00
i	Providing and laying 2 x 2.5 Sq mm. & 1 x 1.5 sq. mm. FR PVC insulated multi stranded copper wire in suitable size pvc rigid pipe/capping-casing on surface of wall duly clamping with necessary fittings and accessories for <u>UPS DB To Computers.</u> Including all necessary terminals etc. complete.	330.00	r. m.		0.00
6	CABLE TERMINATION				
	Supplying, connecting the end terminations with copper cable lugs, Single Compression Brass Cable Glands, Tapping, Crimping etc. complete.				
a	3.5 core 70 Sq mm Al. Armoured	2.00	unit		0.00
b	3.5 core 25 Sq mm Al. Armoured	2.00	unit		0.00
7	EARTHING				
a	Earthing installations as per I.E. rules by making earth stations with 600 mm x 600 mm x 3.15 mm. thick copper plate electrode to be installed such that its top edge shall be at a minimum depth. of 3.0 meter below ground level after preparation of ground with charcoal and salt and connecting the MIP with 25 mm x 6 mm G.I. earth lead-in-strip directly in ground by bolting and then brazing to the copper Plate complete with G.I. bolts of suitable length double nuts and washers including supply and fixing of 50 mm dia. partly perforated G.I. pipe with funnel for watering arrangement. 3.0 m. long with 300 x 300 mm. casting plate connection to be fitted with bitumen, the electrode to be driven under G. L. to an av. depth of 3.15 m. The earthing installation should be provided with 300 mm x 300 mm and 300 mm depth inside dimension masonry inspection pit with C.I. hinged cover having locking arrangements, test link of size 150 mm length x 25 mm x 6 mm copper flat connected to copper earth lead-in-strip and restoring the surfaces duly rammed.	1.00	unit		0.00
b	Providing and fixing Pipe Earthing (IS - 3043) 3.0m. deep with 40 mm. dia. GI pipe With perforations filled with alternate layers of Charcoal and salt. The item includes Funnel on top in brick masonry chamber with CI cover for watering purpose complete.	2.00	unit		0.00

c	Providing and fixing Earth Bus Bar of 25 mm. x 6 mm. x 300 mm. complete with brass nut, bolt, washer & bus insulator.	1.00	unit		0.00
d	Providing and fixing Copper Earth Wire 8 guage in pvc conduit in Floor / walls From pipe earthing to Main Panel Board Complete.	30.00	r. m.		0.00
8	POINT WIRING				
	Providing & fixing POINT WIRING for Ceiling and wall lights / fan. The item includes Circuit wiring from DB to the switch board with 2 x 2.5 sq. mm. PVC insulated copper conductor with 1.0 sq. mm. PVC insulated copper conductor for earthing in appropriate size of PVC conduits ISI mark, point wiring to be laid with 2 x 1.5 Sq. mm. PVC insulated copper conductor with all necessary accessories, such as saddles etc. on surface or embedded in wall, chasing the walls and making the surface neat afterwards. The item includes 6 Amp switch with all base plates & cover plates, M.S. box of same make etc. 3 plate ceiling rose to be provided for Exhaust fans complete. Each switch board should have at least 1 no. 5 Amp raw power socket. There will be at least 8 light points to be connected through UPS supply within banking hall area.				
a	Providing and fixing point wiring with same specifications as MAIN point wiring above : <u>one point to be controlled by one switch.</u>	44.00	unit		0.00
b	Providing and fixing point wiring with same specifications as MAIN point wiring above : <u>two points to be controlled by one switch.</u>	34.00	unit		0.00
c	Providing and fixing power point for WALL / EXHAUST FAN points with 1 x 5pin 6Amp socket outlet to be provided at the location of fan	30.00	unit		0.00
d	Providing & fixing Raw Power Point Includes 2 nos. 5 pin 6 AMP socket and 1 no 6 Amp switch etc. complete.	38.00	unit		0.00
e	Providing & fixing Computer Plug Points with 4 Nos 5 pin 6 Amp sockets, 1 Nos 16 amp switch & one indicator lamp, complete with all necessary accessories. The switch and indicator to be located above the counter while sockets to be fixed below the counter.	30.00	unit		0.00
f	Providing and fixing BELL POINTS on wall / partition with 2x1.0 Sq.MM copper conductor with call bell switch (Push Type) including ANCHOR call bell TRESSA Multi Tune Bell complete.	2.00	unit		0.00
g	Providing and fixing Starter for AC consisting of : 15 Amp. Socket for plug, 12-18 Amp. Starter	15.00	unit		0.00

h	Providing and fixing Glow Sign Board point including supply of timer, thro. separate 20 Amp. DP MCB with metal enclosure complete.	2.00	unit		0.00
9	ELECTRICAL FIXTURES				
	Item includes Providing, assembling, fixing, testing & commissioning Following Fixtures including all accessories, lamps & extension chords as maybe necessary complete. All LED / Flurescent fixtures (except down lighters) to be hung from the RCC ceiling by 20 KG grade adjustable GI chain & in NON False ceiling area they are to be hung by appropriate Down Rods.				
a	Providing and Fixing Recessed mounted diffused optics high performance 2' X 2' LED luminaire of HAVELLS or similar with necessary LED lamp. (VENUS NEO Product code : LHEWDRP7PL1W034 with 34w LED 6000K or similar)	25.00	unit		0.00
b	Providing and Fixing Recessed mounted LED spot light of HAVELLS with necessary LED lamp (15W LED 6000K) or similar. (Ceiling cutout ø 155 mm.)	68.00	unit		0.00
c	Providing and Fixing Surface mounted luminaire suitable for HAVELLS or similar : PHOTON PLUS LED TUBELIGHT : product code : LHLDC LXENL8X018 or similar with Lamp type 18W LED	19.00	unit		0.00
d	Providing and Fixing Surface mounted LED Bulb Holder of HAVELLS with necessary LED lamp (12W LED 6000K) or similar.	3.00	unit		0.00
e	Providing and Fixing wall mounted fans 400 mm. sweep	27.00	unit		0.00
f	Supplying & Fixing of exhaust fan heavy duty industrial type Crompton 225 mm sweep with 1400 RPM.	3.00	unit		0.00
10	TELEPHONE CABLING				
a	S//I/T/Commissioning of 2 pair 0.51 sq. mm. telephone unarmoured cable in 32mm PVC pipe. (Make - Finolex / Delton / Polycab)	150.00	r. m.		0.00
b	S//I/T/Commissioning of Telephone point with 1 No. of of RJ-11 socket, 1 Module Plate & Modular Box as per instructions of the Architect/Consultant.	8.00	unit		0.00
c	S//I/T/Commissioning of telephone Junction box 10 pair krone type housed in MS box with Lock & key.	1.00	unit		0.00
11	DATA CABLING				
a	providing and fixing IOU (information outlet unit) of AT & T make including square face plate MS housing box with RJ-45 socket etc complete	28.00	unit		0.00
b	Providing and fixing data points with CAT-6 UTP cable from system room to individual	450.00	r. m.		0.00

	points in 20mm PVC conduit fixed on wall, ceiling, partition etc. complete				
c	Providing and fixing Mounting (PATCH) cords one per port.				
i	1.0 m. long	28.00	unit		0.00
	TOTAL				-

APPROVED MAKE OF MATERIALS

1	Switch fuse units (HRC)	LEGRAND / SEIMENS / HAVELLS
2	Timer (TSQ 100)	L & T / HAVELLS
3	Voltmeter & Ammeter	A. E. / IMP
4	Voltmeter & Ammeter selector switches	KAYCEE / L & T
5	Phase indicating lamp	Vaishno / SIEMENS / ROSS controls
6	Capacitor	CROMPTON / SIEMENS
7	HRC fuses	GE power / SIEMENS / L & T / SCHNEIDER
8	Power Cable : XLPE	FINOLEX / POLYCAB/HAVELLS / NICCO
9	HRC fuse base & carriers.	GE power / SIEMENS / L & T / SCHNEIDER
10	1.1 KV grade PVC insulated armoured aluminium cable (ISI marked)	GLOSTER / NATIONAL / NICCO / HAVELLS
11	1.1KV / 600V grade PVC insulated & sheathed / insulated copper wire & flexible cords (ISI marked).	FINOLEX / HAVELLS
12	RCCB / ELCB / MCCB	LEGRAND / SEIMENS / HAVELLS
13	Moulded case circuit breaker	LEGRAND / SEIMENS / HAVELLS
14	RCCB / ELCB	LEGRAND / SEIMENS / HAVELLS
15	Switch fuse with rewirable fuses. (6A & 32A TPN)	LEGRAND / SEIMENS / HAVELLS
16	Isolator	LEGRAND / SEIMENS / HAVELLS
17	Changeover switch (on load type)	LEGRAND / SEIMENS / HAVELLS
18	MCB distribution board	LEGRAND / SEIMENS / HAVELLS
19	6/16 Amp modular type switch / flushed type plug socket	Gold Medal / CRABTREE
20	6/16 Amp modular switch / socket, module plate & mounting M.S. / PVC box.	Gold Medal / CRABTREE
21	16/25 Amp., 2 module electronic regulator	Gold Medal / CRABTREE
22	Ceiling rose	KAY / EPP / ANCHOR / JJ
23	Holder	KAY / EPP / ANCHOR / JJ
24	Alarm bell	KHERAJ / GETCO
25	Black enamelled Steel conduits (conforming to IS in all respects)	BEC / SUPREME / AKG
26	Compression type brass gland	DOWELLS / JOHNSON / COMET
27	Cable termination socket	DOWEL L'S

28	Light fitting & lamps	PHILLIPS / HAVELLS
29	Ceiling / Wall Mounted Fan	CROMPTON / ORIENT / HAVELL'S
30	Exhaust fan	CROMPTON / ORIENT / HAVELL'S
31	Industrial type socket & top	HAVELL'S / CROMPTON / LEGRAND
32	Telephone wire	FINOLEX / RRK / NATIONAL
33	Starters	NORTH WEST / CABTREE
34	All other items not covered above	As per sample approved by Employer/Consultant